

**Autodesk®**

Vault Family of Products

Manage your entire design.



Autodesk®

# Stay In Control

Imagine finding design data in seconds. Sharing digital prototyping information securely with team members across the world. Knowing who revised designs—and when.

## Contents

Data Management for Workgroups .....	3
Data Search and Reuse .....	4
Revision Control .....	5
Simple Administration and Configuration .....	6
Autodesk Vault	
Family of Products .....	7
Learn More or Purchase .....	8

Part of the Autodesk solution for Digital Prototyping, the Autodesk® Vault family of data management software helps you keep track of all your digital design data. It securely stores and manages data in a central location, helping teams quickly create, share, and reuse digital prototyping information. With Autodesk® Vault Workgroup, Autodesk® Vault Collaboration, and Autodesk® Vault Professional you'll spend less time chasing down files and more time creating innovative designs.

### Connect Your Teams

Enhance team productivity with support for team-based design. The Autodesk Vault product line lets you work closely with others on projects without putting design data at risk. Multi-user functionality lets you control access to design data so your entire workgroup—from managers to engineers and designers—can participate in the design process. You track and manage all data related to each digital prototype in one secure, central location. And because the Vault product family integrates with Autodesk design applications, it's easier and faster than ever to manage accurate data from concept through manufacturing.

### Improve Productivity

You don't need to recreate the wheel. The Autodesk Vault family of products includes tools that help you reuse data and minimize rework, so you can develop products faster. Instead of starting a complex model or drawing set from scratch, use a similar digital prototype as a starting point for a new design. Vault Workgroup, Vault Collaboration, and Vault Professional improves productivity with functions designed to help you track, find, and organize data quickly. Saved searches and shortcuts speed up data search, while productivity tools let you manipulate design files without breaking application-specific links. And data organization tools let you control indexing and access across file types—so you can improve data sharing and searching based on property sets.

### Control Revisions

Making changes doesn't have to interrupt your workflow—you can control design iterations from within your design application. The Vault product line captures the history of design concepts, so you can push the boundaries of your work, or revert to older revisions if needed. Then use the Vault family of products to secure, release, and track data revisions—granting team members access to only the correct revisions of the files. With Vault Workgroup, Vault Collaboration, and Vault Professional you maintain control over the digital prototype as it moves through the design and production process.

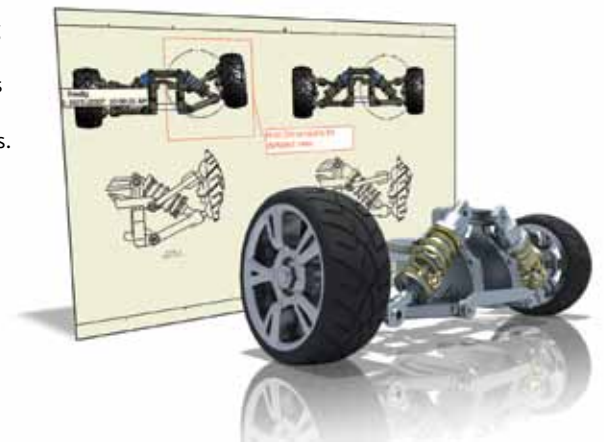
### Data Management Tools

The Autodesk Vault family of products helps to accelerate development cycles and optimize your investment in design data with features that help you organize, manage, and track key design and release management processes. An enhanced set of features facilitates:

- Data management for workgroups
- Data search and reuse
- Administration and configuration
- Revision Control



Image courtesy of Wipaire, Inc.



# Data Management for Workgroups

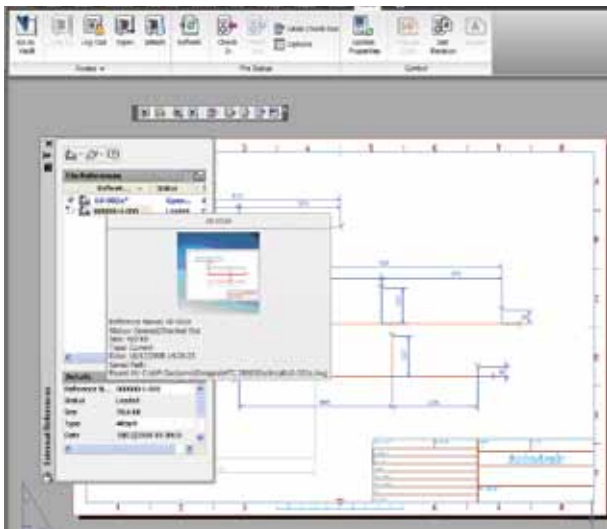
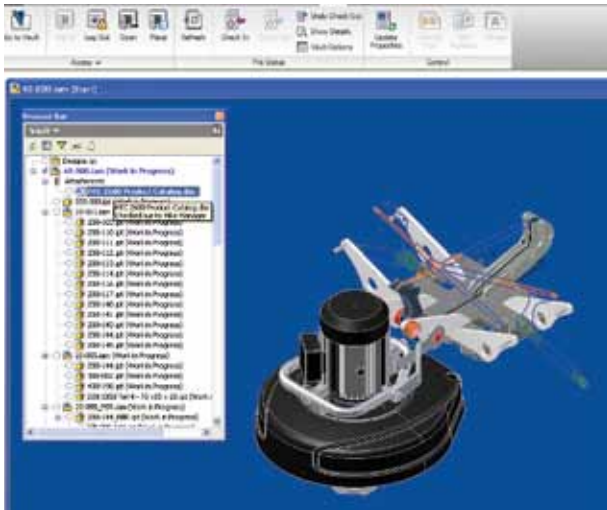
The Vault family of products improves team productivity without disrupting natural design workflows.

## Connect Workgroups

Finish projects faster by enabling more engineers to work on the digital prototype without overwriting each other's data.

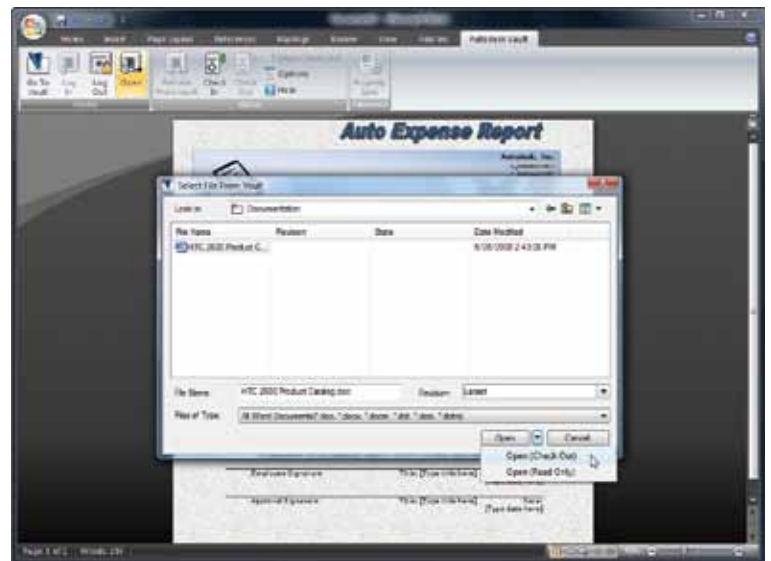
## Best-in-Class Integration with Autodesk Design Software

Integrate the Autodesk Vault family of products with Autodesk design applications such as Autodesk® Inventor®, AutoCAD® Electrical, AutoCAD® Mechanical, and AutoCAD® software. This deep integration makes it easier to manage data associated with your digital prototype from engineering through manufacturing—saving time and helping to preserve data accuracy.



## Tool to Manage Microsoft Office Documents

Vault Workgroup, Vault Collaboration, and Vault Professional are fully integrated with Microsoft® Office®, including Office 2007. As a result, it's simpler to manage all aspects of digital prototyping, including specifications, calculations, and presentations. Your entire workgroup can collaborate on product development, which helps you get to market faster.



## Concurrent Design

Team members can work on a digital prototype without overriding each other's data thanks to multiuser functionality. Team members check out a design before making modifications, then check it back in when they're done. With everyone working together, you can better balance resources, speed projects to completion, and meet tight deadlines.

## Vault Access for Nondesigning Workgroup Members

Give every member of your team access to Autodesk Vault Workgroup, Vault Collaboration, and Vault Professional. Even non-CAD users can add, review, and manage data relevant to a digital prototype.

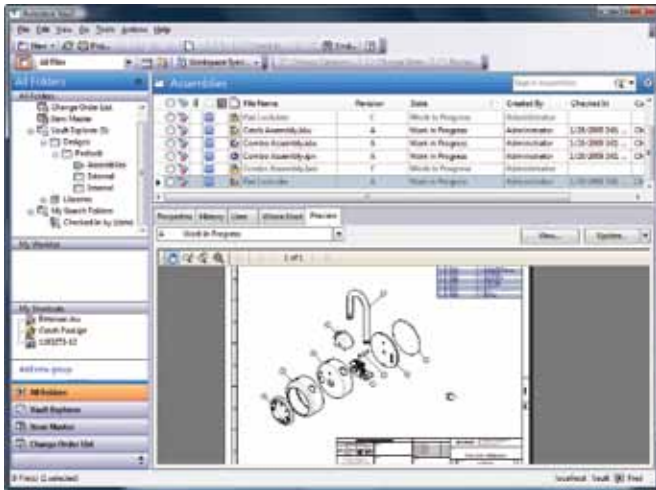


# Data Search and Reuse

Shorten product development time—don't waste your work. The Vault product family helps you find digital design data, and reuse it whenever possible.

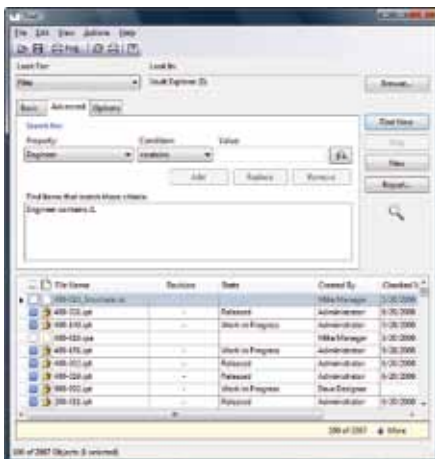
## Preview Interactively with Autodesk Design Review

Publish design data as DWF™ files so non-CAD users can view, print, and mark them up using Autodesk® Design Review software.



## Quick and Simple Searching

Use a range of methods, such as saved searches and shortcuts, to find and organize data. The Vault product line minimizes the time it takes to find information, so you can spend more time designing and less time hunting for data.



## Optimized Data Reuse

Save hours of design time—stop manually re-creating or duplicating complex models and drawing sets. The Vault product family lets you copy a digital prototype—including all related files and documentation—for use in a new design. It also makes it easier to configure the files you want to replace, reuse, or copy.

## Productivity Tools for File Maintenance

Edit and manipulate design files without breaking important application-specific links such as AutoCAD xrefs or Autodesk® Inventor® file relationships. By maintaining design integrity, you save hours of manual cleanup work.

## Immediate 'Where Used' Analysis

Understand the impact of a design change on multiple projects—before you make it. Track relationships between design files and view where specific files are used in each project.

## Improved Data Organization and Search with Property Management

Control property indexing and access across file types. Specify which rich attribute, text, and property data embedded in design files is captured and exposed for queries, filtering, and data organization. Improve data sharing and quick and accurate searching based on property sets.



# Revision Control

Keep control of revisions, from inside your design application. Track changes and versions, helping to reduce manufacturing and design errors and speed cycle times.

## Utilities to Batch-Plot Design Data

Create, manage, and reuse print or plot jobs for all managed files. Autodesk Vault Workgroup, Vault Collaboration, and Vault Professional fully support watermarking and stamping, so you spend less time on administrative tasks.

## Design Concept Exploration

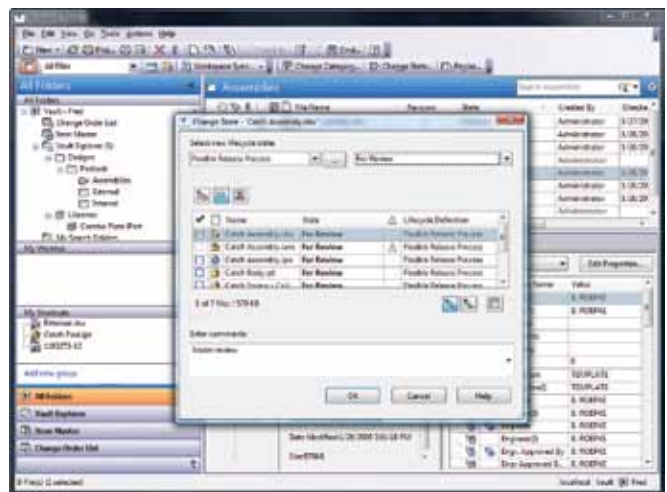
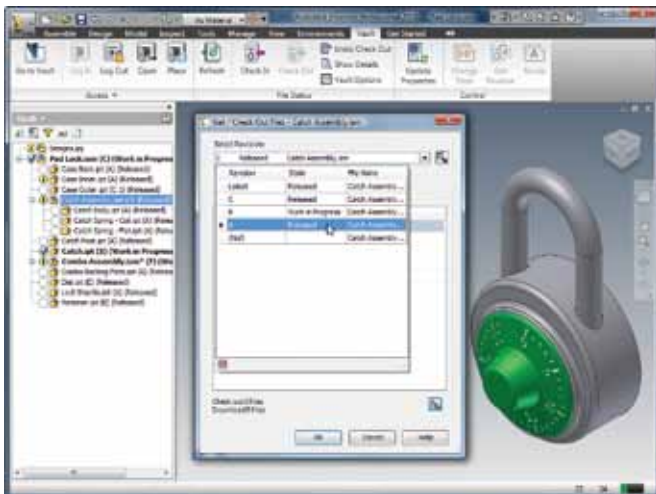
Capture the history of your design concepts with the Vault product family. You can iterate new ideas or revert to old ones, arriving at a final digital prototype more quickly. Create labels or snapshots that make it easier to reference and restore designs. You have the potential to reduce the overhead, errors, and lost data associated with manual backup and copy methods.

## Intuitive Revision Management

Audit and track the revision history of your data files from a single location. Reduce the chance of design and manufacturing errors by securely releasing and tracking files throughout the design cycle, helping make sure that team members access the correct version of data.

## Manage Data Security from Design Concept to Retirement

Manage critical aspects of design data at every stage of the lifecycle to control data security and enforce property standards. Security management helps you give the right people access to the appropriate data at the appropriate time.



# Simple Administration and Configuration

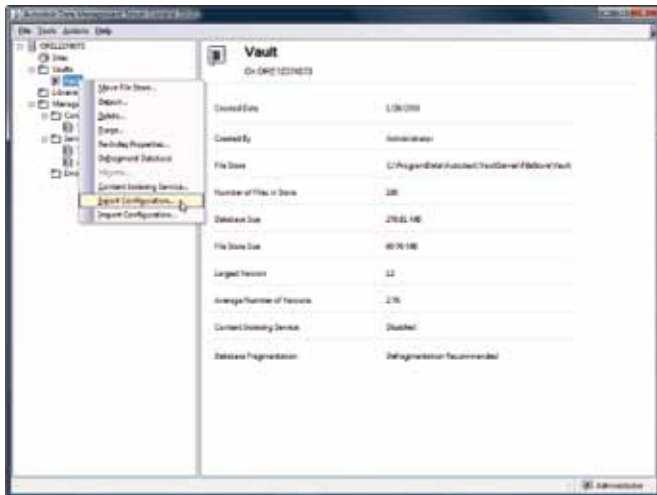
Deploy the Vault product family quickly to start enjoying the benefits of effective data management right away.

## Simple Data Loading

With the Autodesk Vault family of products, it doesn't take much effort to rapidly load large quantities of design data and supporting documentation. It's easy and quick to gather, analyze, prepare, and load data from Autodesk Inventor software and AutoCAD software, plus flat-file data such as PDF and TIFF files. You can even detect and repair missing references and remove duplicate files.

## Easy Administration

Autodesk Vault Workgroup, Vault Collaboration, and Vault Professional provide tools to manage your Vault server, to help you experience maximum uptime. Intuitive administrative tools make server management easier even for those with minimal IT knowledge.

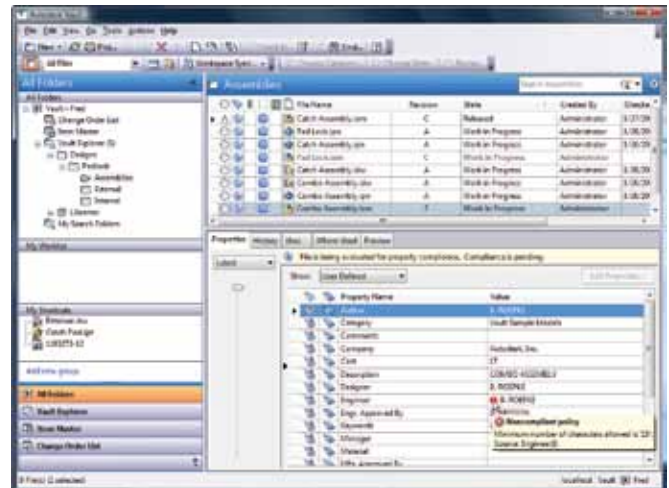


## Configurable Security and Access Control

Safeguard your designs with control over the who, where, and when of data access. Secure designs by folder or file—and restrict who can change the lifecycle state or access a file in a particular lifecycle state.

## Support for Company Standardization

The Vault product family assists you in meeting your company standardization goals. Use property policies and automate file naming, data categories, and behaviors. The Vault family of products helps companies support standards such as ISO 9000 and RoHS.



# Autodesk Vault Family of Products

The Autodesk Vault product line, part of the Autodesk Solution for Digital Prototyping, helps design, engineering, and manufacturing workgroups manage the digital prototyping process by helping users reduce time organizing files, avoid costly mistakes, and more efficiently release and revise designs.

## Autodesk® Vault Workgroup

Autodesk® Vault Workgroup, part of the Autodesk solution for Digital Prototyping, helps design teams easily create and share digital prototyping information by securely organizing, managing, and tracking data from a central location. Design teams can administer access and control, allowing team-based development across disciplines to quickly find and track the when, why, and who of design changes. Team-based collaboration helps users gain productivity without disruption to their natural design workflows. In addition, Vault Workgroup delivers revision and lifecycle control processes directly in the design application, which can result in faster cycle times and better-quality engineering data.

## Autodesk® Vault Collaboration

Autodesk® Vault Collaboration, part of the Autodesk solution for Digital Prototyping, has all of the functionality in Autodesk Vault Workgroup and includes an advanced toolset providing administrators with the scalability needed to manage large workgroups. Share engineering design data with the shop floor using the included web client and expose design related information to the extended enterprise by publishing to Microsoft® SharePoint. Multi-Site functionality enables companies to synchronize design data among distributed workgroups, extending the reach of the digital prototype to the entire organization.

## Autodesk® Vault Professional

Autodesk® Vault Professional software, securely stores and manages engineering information, design data, and documents – shortening the design-to-manufacturing process. It helps design, engineering and manufacturing departments collaborate and share digital prototyping information with multisite tools to connect workgroups across discrete locations. Take full advantage of advanced functionality by giving design departments the tools they need to track engineering change orders, manage bills of materials (BOMs) and promote earlier collaboration through integration to manufacturing business systems.

Functionality	Autodesk® Vault	Autodesk® Vault Workgroup	Autodesk® Vault Collaboration	Autodesk® Vault Professional
File Management Tools	•	•	•	•
Single Workgroup	•	•	•	•
Fast Searching	•	•	•	•
Autodesk CAD Integrations	•	•	•	•
Data Reuse Tools	•	•	•	•
File Revision Control and Lifecycles		•	•	•
Automatic File Naming		•	•	•
Access for Non-CAD Users		•	•	•
Utilities for Batch Plotting		•	•	•
File and Folder Security		•	•	•
Reporting		•	•	•
Server Based DWF Publishing		•	•	•
Multi-Site Replication			•	•
Shop Floor 'Query, View, and Print' Web Client			•	•
Bill of Material Management				•
Engineering Change Management				•
Coexist with Enterprise Business Systems				•

\*AutoCAD®, AutoCAD® Mechanical, AutoCAD® Electrical and Autodesk® Inventor® include integrated data management with Autodesk Vault software, a centralized application for workgroups that securely stores and manages work-in-progress design data and related documents.

# Digital Prototyping for the Manufacturing Market

Autodesk is a world-leading supplier of engineering software, providing companies with tools to experience their ideas before they are real. By putting powerful Digital Prototyping technology within the reach of mainstream manufacturers, Autodesk is changing the way manufacturers think about their design processes and is helping them create more productive workflows. The Autodesk approach to Digital Prototyping is unique in that it is scalable, attainable, and cost-effective, which allows a broader group of manufacturers to realize the benefits with minimal disruption to existing workflows, and provides the most straightforward path to creating and maintaining a single digital model in a multidisciplinary engineering environment.

#### **Learn More or Purchase**

Access specialists worldwide who can provide product expertise, a deep understanding of your industry, and value that extends beyond your software. To license Autodesk® Vault software, contact an Autodesk Premier Solutions Provider or Autodesk Authorized Reseller. Locate a reseller near you at [www.autodesk.com/reseller](http://www.autodesk.com/reseller).

#### **Autodesk Learning and Education**

From instructor-led or self-paced classes to online training or education resources, Autodesk offers learning solutions to fit your needs. Get expert guidance at an Autodesk Authorized Training Center (ATC®) site, access learning tools online or at your local bookstore, and validate your experience with Autodesk certifications. Learn more at [www.autodesk.com/learning](http://www.autodesk.com/learning).

#### **Autodesk Services and Support**

Help accelerate return on investment and optimize productivity with companion products, consulting services, and support from Autodesk and Autodesk authorized partners. Designed to get you up to speed and keep you ahead of the competition, these tools help you make the most of your software—no matter what industry you are in. Learn more at [www.autodesk.com/servicesandsupport](http://www.autodesk.com/servicesandsupport).

#### **Autodesk Subscription**

Autodesk® Subscription gives you immediate access to software upgrades and exclusive access to service and support benefits designed to help you get the most out of your Autodesk software. Learn more at [www.autodesk.com/subscription](http://www.autodesk.com/subscription).

This brochure is printed on 100 percent postconsumer waste recycled paper.

Autodesk, AutoCAD Electrical, AutoCAD Mechanical, AutoCAD, Autodesk Inventor, Inventor, Autodesk Design Review and DWF are registered trademarks or trademarks of Autodesk, Inc., and/or its subsidiaries and/or affiliates in the USA and/or other countries. All other brand names, product names, or trademarks belong to their respective holders. Autodesk reserves the right to alter product and services offerings, and specifications and pricing at any time without notice, and is not responsible for typographical or graphical errors that may appear in this document.  
© 2010 Autodesk, Inc. All rights reserved.